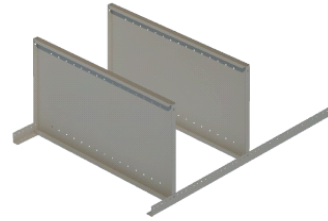


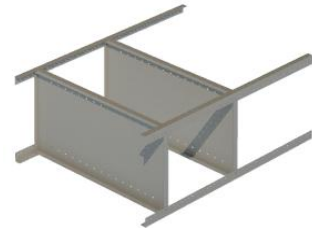
A medium to large flat head screwdriver or equivalent power tool is required to complete assembly

Assembly Instructions (Average time to assemble – 30 - 40 minutes per bay)

1. Place two uprights on the floor and begin to attach your shelves by screwing the nuts and bolts.



2. Next add the other two uprights, repeating the same process



3. Bracing is added to the sides and back of the bay forming "X" shapes. Ensure that the bracing is very securely affixed to ensure stability. Please refer to the Bracing Pattern sheet for more than two bays (see page 2)

- 4 If supplied add the base plinth under the bottom shelf

The unit is now ready for use

Thank you for purchasing your British Standard Racking system. Please take a moment to familiarise yourself with the components and the order of assembly. Note that the generic illustration above may not comprise the same amount of shelving levels as the bay you have purchased!

NB – For Bays containing CLAD sides and back, please ignore the instructions for bracing . Cladding is screwed to the unit in the same manner, with a back and sides. SEE PAGE 2

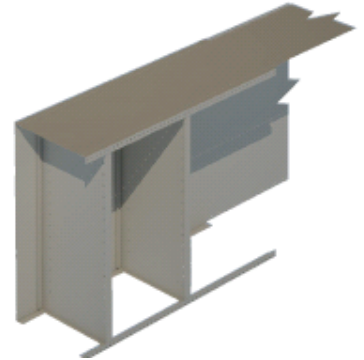
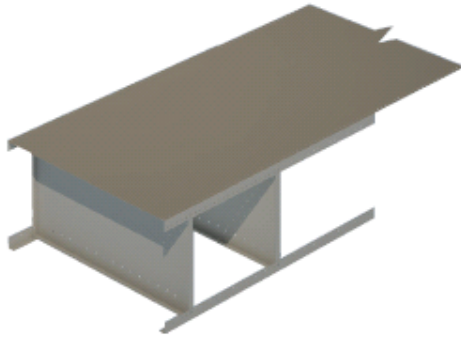
## GENERAL SAFETY INFORMATION



- Ensure all loads are evenly distributed – max 136KG (300lbs) per shelf
- Never stand on the assembled units
- If in doubt call 0845 194 7370 (Mon – Fri 08.00 to 17.00)

For fully clad units, please follow the initial build up steps as listed on page one. The back sheet is bolted to the back of the unit. THIS SHOULD BE BETWEEN THE SHELF AND THE ANGLE POST AND NOT ONTO THE BACK OF THE UNIT!

Ensure that the nuts and bolts are fully tightened to ensure that the stability and safety of the unit is assured. Next turn the unit onto its side and repeat the process using the side panels. Again fully tighten the nuts and bolts to ensure safety.



Finally add the base plate and ensure that its nuts and bolts are tightened securely.

IF POSSIBLE TWO PEOPLE SHOULD LIFT THE UNIT.

The main unit is now ready to use. You may add shelf dividers by sliding in the dividers and affixing them with the clips provided. Please ask us about other accessories including shelf trays and boxes.

